

THE JAMES WALKER CO.

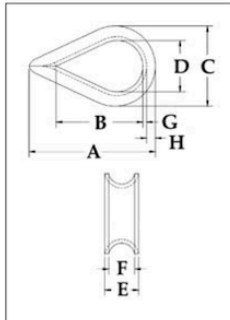
CROSBY WIRE ROPE THIMBLES

G-411



G-411 meets the performance requirements of Federal Specification FF-T-276b Type II, except for those provisions required of the contractor.

- Hot Dip galvanized steel.
- The standard choice for light duty applications and loading conditions.



Standard Wire Rope Thimbles

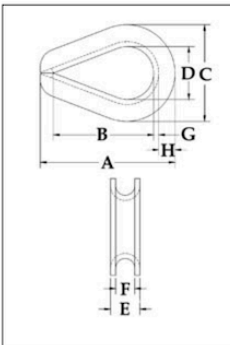
Rope Dia.		G-411 Stock No.	Weight Per 100 (lbs.)	Dimensions (in.)							
(in.)	(mm)			A	B	C	D	E	F	G	H
1/8	3-4	1037256	3.50	1.94	1.31	1.06	.69	.25	.16	.05	.13
3/16	5	1037274	3.50	1.94	1.31	1.06	.69	.31	.22	.05	.13
1/4	6-7	1037292	3.50	1.94	1.31	1.06	.69	.38	.28	.05	.13
5/16	8	1037318	4.00	2.13	1.50	1.25	.81	.44	.34	.05	.13
3/8	9-10	1037336	6.70	2.38	1.63	1.47	.94	.53	.41	.06	.16
1/2	11-13	1037354	12.50	2.75	1.88	1.75	1.13	.69	.53	.08	.19
5/8	16	1037372	34.50	3.50	2.25	2.38	1.38	.91	.66	.13	.34
3/4	18-20	1037390	47.10	3.75	2.50	2.69	1.63	1.08	.78	.14	.34
7/8	22	1037416	84.60	5.00	3.50	3.19	1.88	1.27	.94	.16	.44
1	24-26	1037434	97.50	5.69	4.25	3.75	2.50	1.39	1.06	.16	.41
1-1/8 - 1-1/4	28-32	1037452	175.00	6.25	4.50	4.31	2.75	1.75	1.31	.22	.50

G-414



G-414 meets the performance requirements of Federal Specification FF-T-276b Type III, except for those provisions required of the contractor.

- Available in Hot Dip galvanized or Stainless Steel (Type 304).
- Stainless steel recommended for more corrosive environments where greater protection is required.
- Greater protection against wear and deformation of the wire rope eye.
- Longer service life.



Extra Heavy Wire Rope Thimbles

Rope Dia.		Stock No.		Weight Per 100 (lbs.)	Dimensions (in.)							
(in.)	(mm)	G-414 Galv.	SS-414 Stainless		A	B	C	D	E	F	G	H
* 1/4	6-7	1037639	1037960	6.50	2.19	1.62	1.50	.88	.41	.28	.06	.25
* 5/16	8	1037657	1037988	11.80	2.50	1.88	1.81	1.06	.50	.34	.08	.30
* 3/8	9-10	1037675	1038004	21.60	2.88	2.12	2.12	1.12	.63	.41	.11	.39
7/16	11-12	1037693	-	34.70	3.25	2.38	2.38	1.25	.72	.47	.12	.45
* 1/2 - 9/16	13-15	1037719	1038022	51.00	3.62	2.75	2.75	1.50	.89	.59	.15	.48
* 5/8	16	1037755	1038040	75.70	4.25	3.25	3.12	1.75	1.00	.66	.16	.53
* 3/4	18-20	1037773	1038068	158.10	5.00	3.75	3.81	2.00	1.22	.78	.22	.69
7/8	22	1037791	-	177.80	5.50	4.25	4.25	2.25	1.38	.94	.22	.78
1	24-26	1037817	-	313.90	6.12	4.50	4.75	2.50	1.56	1.06	.25	.88
1-1/8 - 1-1/4	28-32	1037835	-	400.00	7.00	5.12	5.88	2.88	1.88	1.31	.25	1.25
1-1/4 - 1-3/8	32-35	1037853	-	886.00	9.08	6.50	6.81	3.50	2.25	1.44	.37	1.29
1-3/8 - 1-1/2	35-38	1037871	-	1294.80	9.00	6.25	7.12	3.50	2.62	1.56	.50	1.31
1-5/8	40	1037899	-	1700.00	11.25	8.00	8.12	4.00	3.00	1.72	.50	1.38
1-3/4	44	1037915	-	1775.00	12.19	9.00	8.50	4.50	3.06	1.84	.50	1.50
1-7/8 - 2	48-52	1037933	-	2775.00	15.12	12.00	10.38	6.00	3.38	2.09	.50	1.69
2-1/4	56	1037951	-	3950.00	17.50	14.00	11.88	7.00	3.88	2.38	.62	1.82

* SS-414 sizes available in stainless steel type 304.

WARNING: DO NOT EXCEED RATED CAPACITIES