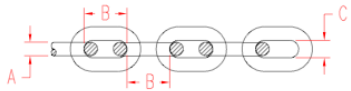


THE JAMES WALKER CO.

STAINLESS STEEL HARDWARE

LIFTING CHAIN (S5) 316L STAINLESS STEEL



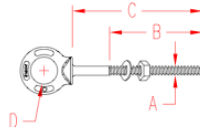
ITEM	SIZE	A	B	C	WLL	BL	WT
S0603-0005	3/16"	0.19"	0.58"	0.25"	1,100	4,400	0.36
S0603-0007	9/32"	0.28"	0.85"	0.38"	2,200	8,800	0.97
S0603-0008	5/16"	0.32"	0.95"	0.45"	2,700	10,800	0.98
S0603-0010	3/8"	0.39"	1.18"	0.55"	4,400	17,600	1.41
S0603-0013*	1/2"	0.51"	1.55"	0.75"	7,300	29,200	2.60

RATED FOR OVERHEAD LIFTING

NOTE: CALIBRATED SUNCOR GRADE 50 LIFTING CHAIN, MADE TO GRADE 80 DIMENSIONS. NEVER EXCEED WORKING LOAD LIMIT. WORKING LOADS ARE BASED ON GRADUAL PULL AND NOT SHOCK LOADS. MAKE SURE THAT ALL COMPONENTS IN YOUR ASSEMBLY ARE OVERHEAD LIFTING RATED AND HAVE THE SAME WORKING LOADS.



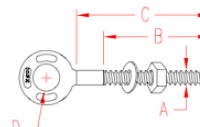
SHOULDER EYE BOLT 316-NM STAINLESS STEEL



ITEM	A	B	C	D	THREAD	WLL
	(size)					(lb)
S0314-0705	1/4"	1.50"	2.00"	0.50"	1/4"-20	500
S0314-0710	1/4"	2.50"	4.00"	0.50"	1/4"-20	500
S0314-0806	5/16"	1.50"	2.25"	0.63"	5/16"- 18	800
S0314-0810	5/16"	2.50"	4.25"	0.63"	5/16"- 18	800
S0314-1006	3/8"	1.50"	2.50"	0.75"	3/8"- 16	1,200
S0314-1012	3/8"	2.50"	4.50"	0.75"	3/8"- 16	1,200
S0314-1304	1/2"	1.25"	1.50"	1.00"	1/2"- 13	2,150
S0314-1308	1/2"	1.50"	3.25"	1.00"	1/2"- 13	2,150
S0314-1315	1/2"	3.00"	6.00"	1.00"	1/2"- 13	2,150
S0314-1603	5/8"	0.75"	1.00"	1.25"	5/8"- 11	3,440
S0314-1605	5/8"	1.75"	2.00"	1.25"	5/8"- 11	3,440
S0314-1610	5/8"	2.00"	4.00"	1.25"	5/8"- 11	3,440
S0314-1615	5/8"	3.00"	6.00"	1.25"	5/8"- 11	3,440
S0314-2003	3/4"	0.88"	1.00"	1.50"	3/4"- 10	5,140
S0314-2005	3/4"	1.75"	2.00"	1.50"	3/4"- 10	5,140
S0314-2012	3/4"	2.00"	4.50"	1.50"	3/4"- 10	5,140
S0314-2015	3/4"	3.00"	6.00"	1.50"	3/4"- 10	5,140
S0314-2213	7/8"	2.50"	5.00"	1.75"	7/8"- 9	7,130
S0314-2504	1"	1.38"	1.44"	2.00"	1" - 8	9,370
S0314-2506	1"	2.25"	2.50"	2.00"	1" - 8	9,370
S0314-2515	1"	3.00"	6.00"	2.00"	1" - 8	9,370

NOTE: EYE BOLTS HAVE FORGED MARKINGS OF 316-NM, SIZE AND WLL IN TONS. ALL THREADS ARE "UNC". ONE NUT AND WASHER ARE INCLUDED. EXTRA NUTS AND WASHERS ARE AVAILABLE FROM STOCK. SHAFT AND UNDERSIDE OF SHOULDER ARE MACHINED FOR PERFECT FIT AND SEATING.

PLAIN EYE BOLT 316-NM STAINLESS STEEL



ITEM	A	B	C	D	THREAD	WLL
	(size)					(lb)
S0315-0705	1/4"	1.50"	2.00"	0.50"	1/4"-20	500
S0315-0710	1/4"	2.50"	4.00"	0.50"	1/4"-20	500
S0315-0806	5/16"	1.50"	2.25"	0.63"	5/16"- 18	800
S0315-0810	5/16"	2.50"	4.25"	0.63"	5/16"- 18	800
S0315-1006	3/8"	1.50"	2.50"	0.75"	3/8"- 16	1,200
S0315-1012	3/8"	2.50"	4.50"	0.75"	3/8"- 16	1,200
S0315-1304	1/2"	1.25"	1.50"	1.00"	1/2"- 13	2,150
S0315-1308	1/2"	1.50"	3.25"	1.00"	1/2"- 13	2,150
S0315-1315	1/2"	3.00"	6.00"	1.00"	1/2"- 13	2,150
S0315-1603	5/8"	0.75"	1.00"	1.25"	5/8"- 11	3,440
S0315-1605	5/8"	1.75"	2.00"	1.25"	5/8"- 11	3,440
S0315-1610	5/8"	2.00"	4.00"	1.25"	5/8"- 11	3,440
S0315-1615	5/8"	3.00"	6.00"	1.25"	5/8"- 11	3,440
S0315-2003	3/4"	0.88"	1.00"	1.50"	3/4"- 10	5,140
S0315-2005	3/4"	1.75"	2.00"	1.50"	3/4"- 10	5,140
S0315-2012	3/4"	2.00"	4.50"	1.50"	3/4"- 10	5,140
S0315-2015	3/4"	3.00"	6.00"	1.50"	3/4"- 10	5,140
S0315-2213	7/8"	2.50"	5.00"	1.75"	7/8"- 9	7,130
S0315-2504	1"	1.38"	1.44"	2.00"	1" - 8	9,370
S0315-2506	1"	2.25"	2.50"	2.00"	1" - 8	9,370
S0315-2515	1"	3.00"	6.00"	2.00"	1" - 8	9,370

NOTE: EYE BOLTS HAVE FORGED MARKINGS OF 316-NM, SIZE AND WLL IN TONS. ALL THREADS ARE "UNC". ONE NUT AND WASHER ARE INCLUDED. EXTRA NUTS AND WASHERS ARE AVAILABLE FROM STOCK. SHAFT IS MACHINED FOR PERFECT FIT AND SEATING.

WARNING: DO NOT EXCEED RATED CAPACITIES